

TS23 is the Telematics Survey that captured the thoughts of over 1800 fleet professionals across the globe to understand the toughest challenges they are facing and how they plan to adapt in 2023.

The Teletrac Navman findings highlighted that the vastly changing business landscape and new complexities caused by the macro-economic environment are impacting fleet operations.



Equipment maintenance and other rising operating costs are key business challenges.

Artificial Intelligence is the leading emerging technology and adoption is set to increase in 2023.

Telematics users are seeing improvements in customers service whilst reducing operational cost.

THE BIG FIX

Vehicle and equipment maintenance has been identified as a major expense across construction fleets, with 44% of operators saying it is one of their largest areas of expense, ranking it above the purchase of new equipment / vehicles, fuel and payroll. With increasing pressure on the supply chain, maintenance teams are faced with inflated costs for parts and extended periods of downtime.



ROAD TO SAFETY

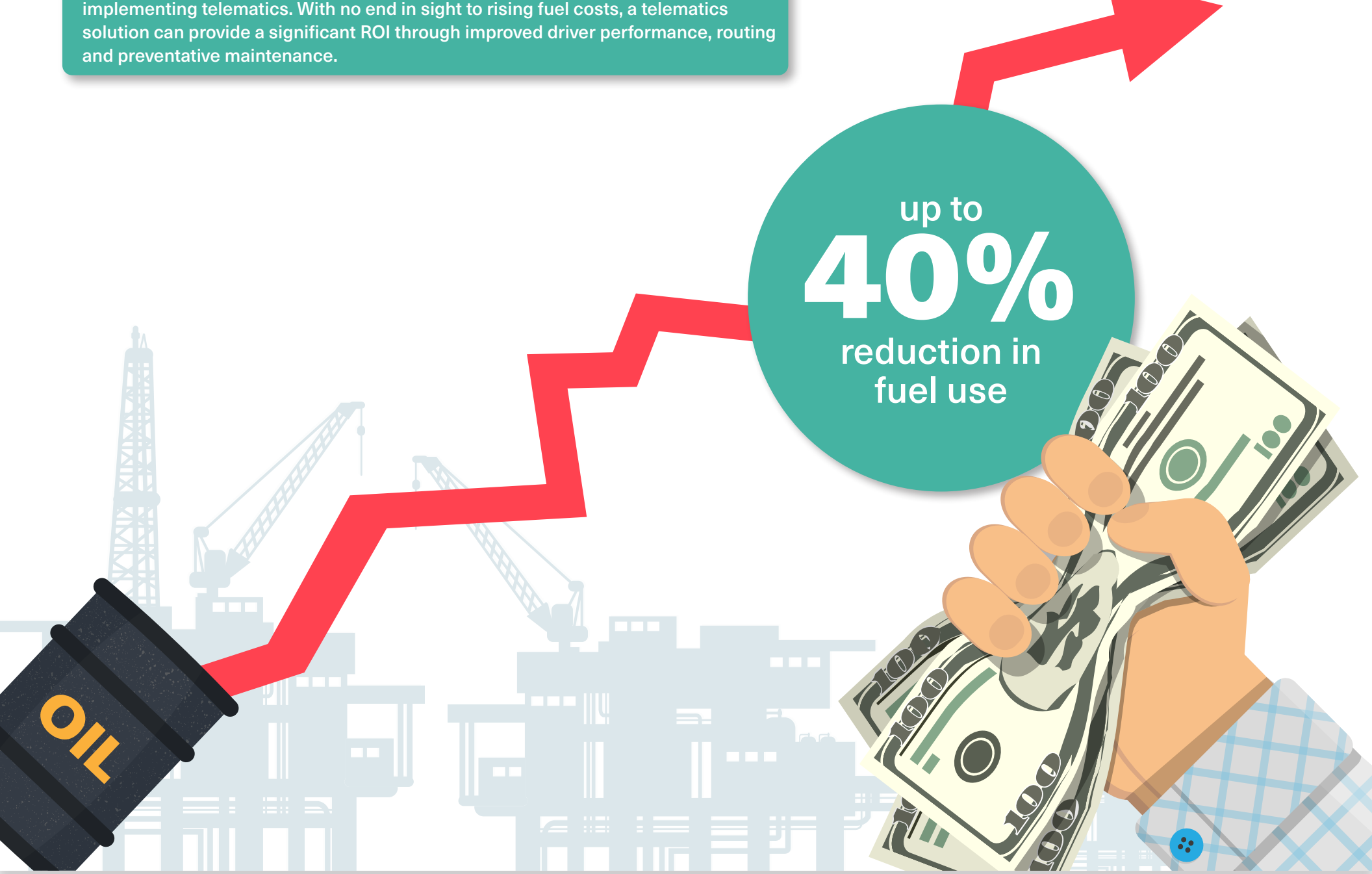
95% have seen fewer accidents because of their telematics solution with 94% using driver performance benchmarking to improve safety. While the overwhelming reason for safety programs is driver wellbeing, the on-going driver shortage, rising fuel costs and maintenance expense are seeing more operators turn to performance monitoring tools.



95%
fewer incidents when using telematics

FUELING SAVINGS

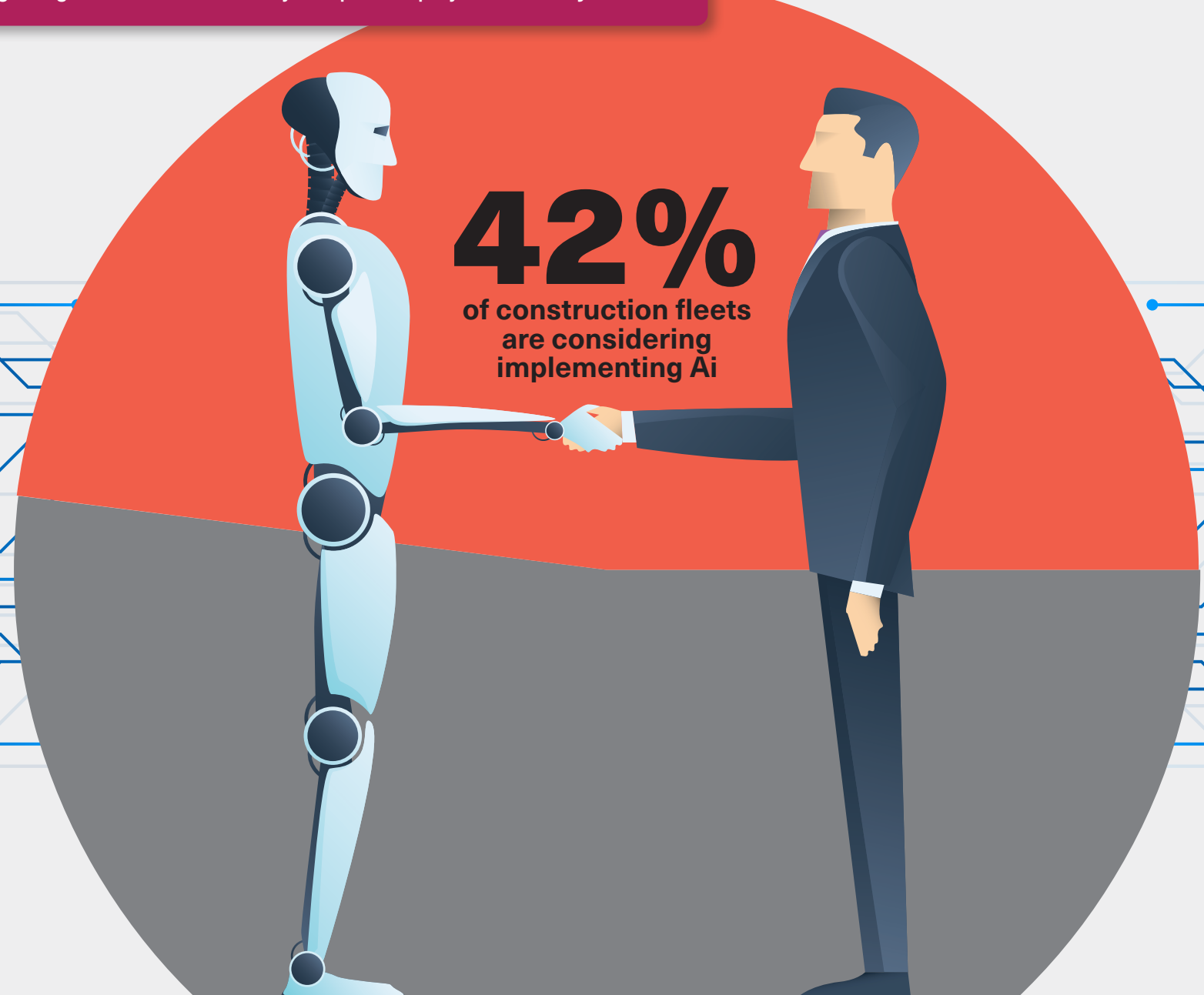
97% of telematics users have seen a reduction in fuel cost of up to 40% after implementing telematics. With no end in sight to rising fuel costs, a telematics solution can provide a significant ROI through improved driver performance, routing and preventative maintenance.



up to **40%**
reduction in fuel use

AI HAS ARRIVED

This was the #1 emerging technology the construction industry is focusing on and with a wide range of applications covering resource planning, cost overruns and building design it is set to have a major impact on project efficiency.



42%
of construction fleets are considering implementing Ai

SERVICE WITH A SMILE

45% of respondents report the most significant benefit of their telematics program was improved customer service. With the ability to effectively manage resources across jobsites, management teams can keep projects on schedule without budgets slipping.

- ON-TIME**
★★★★★
- ON-BUDGET**
★★★★★
- ON-QUALITY**
★★★★★



Teletrac Navman carried out a survey of over 1800 global fleet professionals to investigate the prevailing attitude towards the future of the transport and construction industries, with a particular focus on macro-economic challenges. Through this we have identified several data trends which explain the current state of the field, and to understand the full impact of these challenges, we surveyed both fleet managers who had already set out on their telematics journey, and those that were yet to begin. Our data, which was collated in September 2022, consisted of global responses, with 87.6% of respondents operating fleets of over 25 vehicles and assets. Results may not amount to 100 percent due to questions with multiple selections.